

EAL:

e-Assessment Case Study

Case Study Introduction

Shipley
United Kingdom
October 2010

Reproduced with
permission from EAL



EAL (EMTA Awards Limited) is the UK's leading awarding organisation for engineering National Vocational Qualifications (NVQs) and their Scottish equivalent, SVQs. We provide a range of high-quality vocational qualifications in engineering, manufacturing, building services engineering, energy and utilities, and related sectors. Working closely with approved centres, we offer an unparalleled level of service through the industry's only dedicated verification team and our UK-based customer services.

Alongside our N/SVQ portfolio sits a variety of Vocationally Related Qualifications (VRQs) for the engineering and building services sectors. These qualifications range from those driven by industry regulations, such as qualifications to meet the 17th Edition Wiring Regulations, to technical certificates like Engineering & Technology or Plumbing, which form part of Semta and SummitSkills apprenticeship frameworks as well as being stand-alone VRQs. To complete our portfolio, EAL also offers Key Skills.

e-Assessment capability

EAL offers e-Assessment for our VRQ qualifications and Key Skills.

We first introduced e-Assessment in 2004, and in 2008 we enhanced the online exams system to increase its capability and improve customer experience. Since then, in response to customer feedback and in line with our commitment to service excellence, we have continued to add new facilities.

The system, SecureAssess®, provides an e-Assessment option to EAL-approved centres (employers, colleges and training providers) that run EAL VRQs and Key Skills. SecureAssess® offers many advantages over traditional paper-based methods of examination, especially in the flexibility of its online capability. The system provides several options to suit both the centre and the learner, allowing centres, for example, to schedule exams well in advance, or within a short space of time on the same day, especially in the flexibility of its online capacity and its ability to considerably reduce administration time.

Examinations can be sat anywhere that provides an internet connection, as long as EAL's regulations for the conduct of examinations can be implemented at that location.

After an on-screen exam, SecureAssess® has a feedback feature that provides a report on the outcome for both learners and the centre. This enables centres to adapt their learning programmes as required and gives learners valuable feedback on their results.

The online system also allows centres and learners to benefit from a faster turnaround. The time between taking the exam and receiving the result is much shorter – in some cases the result is available immediately after the exam.

Centres that utilise SecureAssess® praise its flexibility and user-friendly appearance. In 2009, the system handled almost 30,000 online exams. We expect this to increase in the future due to the benefits the system offers for centres.

[Continued...](#)

Contact:

Hawa Mahmood
Marketing Manager
BTL Group Ltd.

T: 01274 203 255
F: 01274 203 251
E: hawa.mahmood@btl.com

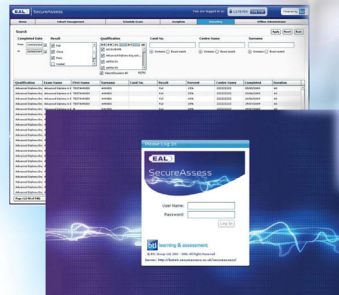
Creators of:



BTL has created one of the most comprehensive, secure and innovative e-Assessment solutions on the market: Surpass. Surpass is used by a number of leading national and international Awarding and Professional bodies to develop and deliver their global e-Assessment programmes.

e-Assessment Case Study continued...

Reproduced with
permission from EAL



Views of employers

For employers who want to maintain efficiency yet provide training opportunities for their employees, SecureAssess® offers the best of both worlds.

Clarkson Evans

Clarkson Evans specialises in installing complete electrical wiring systems in over 7000 new homes each year. It is also one of the UK's leading electrical training specialists, training around 1,500 people – from apprentices to experienced electricians – annually.

Jon Dicken, Head of Electrical Training at Clarkson Evans, was quick to praise EAL's e-Assessment system, which the company has used for six years:

"We use EAL's exam system for the Part P unit of the EAL Certificate for Domestic Electrical Installers VRQ. Using the system is so simple and straightforward. We get instant results for our learners and the reduction in administration time is fantastic... We don't have to wait for papers to be sent away to be marked, and we also don't need any additional software to run the system. This means we can run exams anywhere, even in remote areas, as long as we have an internet connection."

Southampton Engineering Training Association (seta)

SETA, another EAL-approved centre, works with local employers such as ExxonMobil. They employ SecureAssess® for EAL's Key Skills and Level 2 Intermediate Certificate in Engineering & Technology. They have used our system for six years.

Bryan Warner, EAL Centre Coordinator at SETA, explains the benefits of e-Assessment:

"EAL's SecureAssess® system is extremely flexible and suits us down to the ground. It is great to be able to book and carry out an exam on the same day. This, in turn, gives us flexibility with our learners. There have even been occasions when apprentices have asked us when they can do their Key Skills exam, and we've been able to offer this to them there and then! With EAL's system we have the ability to offer exams outside of normal work hours, which particularly suits employers as it means that there is no down time to their business."

Summary

Although all of the feedback on our SecureAssess® system has been positive, we are continually striving to improve its value to our customers.

Our system is available to all approved centres delivering EAL VRQs and Key Skills.